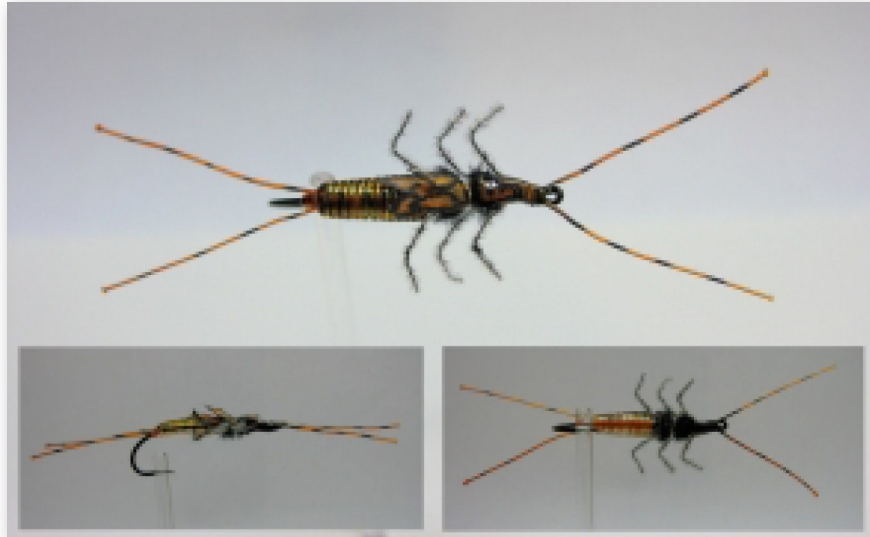




**magic city
fly fishers**

fly tying patterns



Ron Fisher's Giant Ptyanarsis Stonefly

Hook: #6 Tiemco 100's
Thread: White flat waxed nylon 6/0 White monocord
Antenna: 12# to 20# test white fly line backing
Legs: White or a light colored New Dub
Other: Straight pins, V-rib (clear), Tyvek paper, Lighter and bodkin, 5 minute epoxy
Permanent markers: Black, yellow, reddish-brown, dark gray, olive, red and celery green.

FIRST HALF OF FLY:

- 1.* Using flat waxed nylon thread, start at the hook bend and create a hump or dam of thread then move thread forward to the headspace.
2. Tie in two inch piece of fly line backing beginning at the headspace and ending at the hump of thread. Do this on both sides of the hook, and be sure to tie in on the sides of the hook, not on the top. Clip the tail antenna to size. The protruding backing should form a "v."
3. Tie in a piece of V rib. Lay the piece on top of the hook. Start tying at the headspace and cover the piece with thread all the way back to the thread hump. Clip off any excess around the headspace area.
4. Locate the center of the shank and then move forward toward the eye another eighth of an inch. Start building a tapered body with your flat waxed nylon thread back toward the bend of the hook. Do not compromise the thread hump. You should end with a substantial hump near the center of the hook and a quick taper to the bend.
5. Clip two pins to size that will be tied to each side of the hook starting at the rear thread hump and

ending at the front of the center hump. Tie one in on each side and wrap thread over each until a small triangular body emerges.

6. Turn the fly over in your vice and select a red or celery green permanent marker. Color the bottom of the fly.
7. Turn the fly over and color the top with a darker permanent marker.
8. Take the larva lace or v-rib piece and begin wrapping forward to the center hump. Make tight wraps in the beginning and relax the wraps as you near the hump. Tie off at the end of the center hump.
9. Make two or three whip finish wraps in front of the center hump and clip off the flat waxed nylon thread.
10. Tie on the 6/0 white mono cord thread.

SECOND HALF OF FLY:

1. Tie in a quarter inch width pre-formed tyvek wing case at the beginning of the thorax (directly behind the center hump).
2. Tie in New dub legs. One on each side. leave ½ inch in length.
3. Cut a strip of light colored furry foam, tie in and wrap around hook. Be sure to tie in foam side up and furry side down.
4. Tie in second wing case.
5. Tie in the protnam.
6. Tie in the second set of New Dub legs.
7. Tie in and wrap furry foam.
8. Tie in third set of New Dub legs.
9. Pull the protnam over the top and tie in just in front of the eye of the hook.
10. Tie in the front antenna using the same fly line backing as was used for the back antenna.
11. Shape the head and whip finish.
12. Turn fly over and color the bottom with the same lighter permanent maker used earlier.
13. Turn fly back over and color everything on top with the darker permanent marker. Be sure to color under the wing casts and all of the antenna.
14. Burn the tips of each of the antenna.
15. Using your bodkin and being very careful not to bum through the New Dub legs, heat the bodkin with the lighter flame and touch and bend the middle of each leg with it.
16. When done, clip the tips of each leg so that all are the same length.
17. Mix a small amount of five minute epoxy and apply a small amount between the two back antenna and over the original thread hump. This will keep the back antenna “v’d” properly. Next place a small amount of epoxy at the base of the second wing case and bring the epoxy mound forward all the way to the eye of the hook. (Don’t get it in the eye!) Work to create a small mound to enhance the silhouette of the fly. Turn the fly over slowly to make certain that the epoxy does not run. In two or three minutes the epoxy will set.

* If this fly is to be fished, you must add lead in at this point. .25 lead should be wrapped from the bend to the center of the hook and .20 lead should be wrapped forward to the headspace.

Detailing: if you wish to detail this fly, use fine point permanent markers to highlight the fly. Do this before you put the epoxy on the protnum.